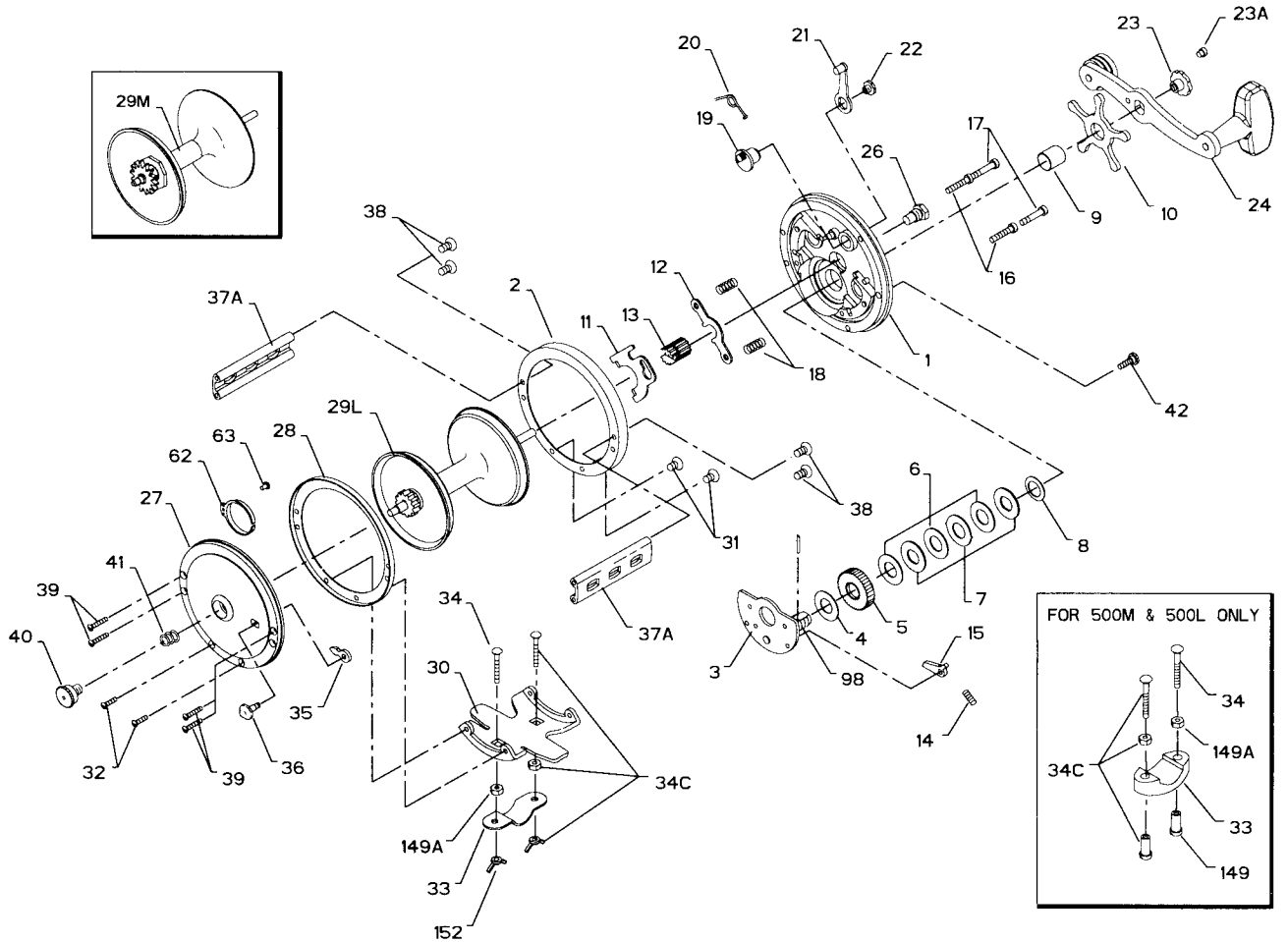




PARTS AND PRICE LIST FOR MODELS 500 AND 501 JIGMASTER



Key No.	Part No.	Description	Price	Key No.	Part No.	Description	Price
1	1N-500	Right Side Plate	\$6.75	28	28-250	Left Side Ring (Inner)	\$2.75
	1N-501	Right Side Plate	6.75	29L	29L-500	Spool	18.75
2	2-250	Left Side Ring	5.50		29L-501	Spool	17.00
3	3-500	Bridge w/Sleeve	7.60	29M	29M-250	Spool	14.00
4	4-60	Fiber Washer	.40	30	30-200	Stand (500)	5.75
5	5-500	Main Gear	4.30	30-49	30-49	Stand (501)	5.35
6	6-309	Drag Washer (3 req.)	.80	31	31-19	R.S. Stand Screw	.40
7	7C-500	Metal Washer Set	3.00	32	32-16	L.S. Stand Screw	.40
8	8-60	Tension Spring	.50	33	33-113	Rod Clamp (500)	4.00
9	9-60	Spacing Sleeve	.90	33-49	33-49	Rod Clamp (501)	2.50
10	10-505	Star Drag Wheel	3.10	*33R-200	33R-200	Ringed Rod Clamp (500) (Optional)	6.25
11	11-99	Eccentric Jack	1.25	*33R-49	33R-49	Ringed Rod Clamp (501) (Optional)	5.35
12	12-500	Pinion Yoke	.95	34	34-45	Clamp Screw (500)	.90
13	13-500	Pinion	3.10	34-49	34-49	Clamp Screw (501)	.50
14	14-500	Dog Spring	.40	34C	34C-45	Rod Clamp Screw w/Nuts (500)	2.25
15	15-500	Dog	.90	34C-49	34C-49	Clamp Screw w/Nuts (501)	1.20
16	16-60	Lower Bridge Screw	.40	35	35-60	Click Tongue	.90
17	17-60	Upper Bridge Screw	.40	36	36-60	Click Button	.80
18	18-60	Clutch Spring	.40	37A	37A-500	Spacer Bar	4.40
19	19-250	Eccentric	1.80	*37A-506	37A-506	Spacer Bar	4.40
20	20-60	Eccentric Spring	.40	38	38-7	Right Side Post Screw	.40
21	21-66	Eccentric Lever	1.50	39	39-5	Left Side Post Screw	.40
22	22-99	Eccentric Screw	1.50	40	40-60	Left Side Bearing	2.35
23	23-60	Handle Screw	1.70	41	41-60	Bearing Spring	.80
23A	110-60	Handle Lock Screw	.40	42	TA-200	Take Apart Thumb Screw	2.25
24	24-66	Handle	6.60	98	98-505	Gear Sleeve	3.75
	24-155	Handle (501)	6.00	149	149-45	Clamp Nut	.90
26	26-155	Right Side Bearing	1.80	149A	149-200	Hex Nut (2 req.)	.45
27	27-500	Left Side Plate	5.15	152	152-200	Clamp Wing Nut (2 req.)	.45

*Not Shown